

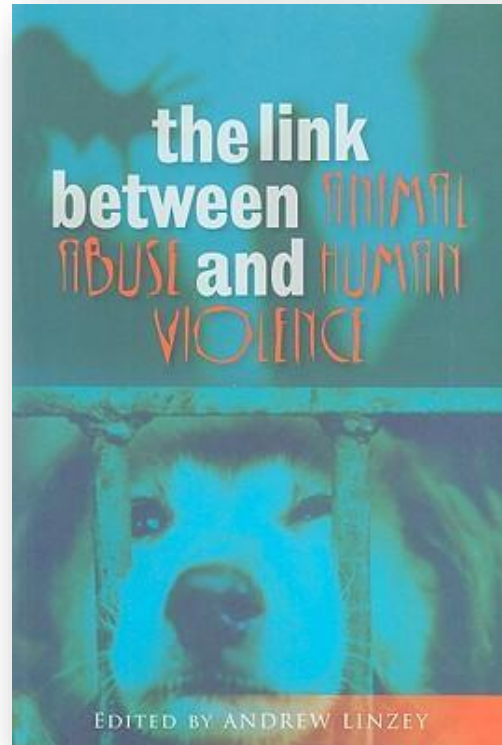
In search of EMPATHY



**Would animal
abuse concern us
more, if we knew
the damage it can
do to the
emotional
development of
our children?**



Ground-breaking research in
“The Link between Animal Abuse and Human Violence”



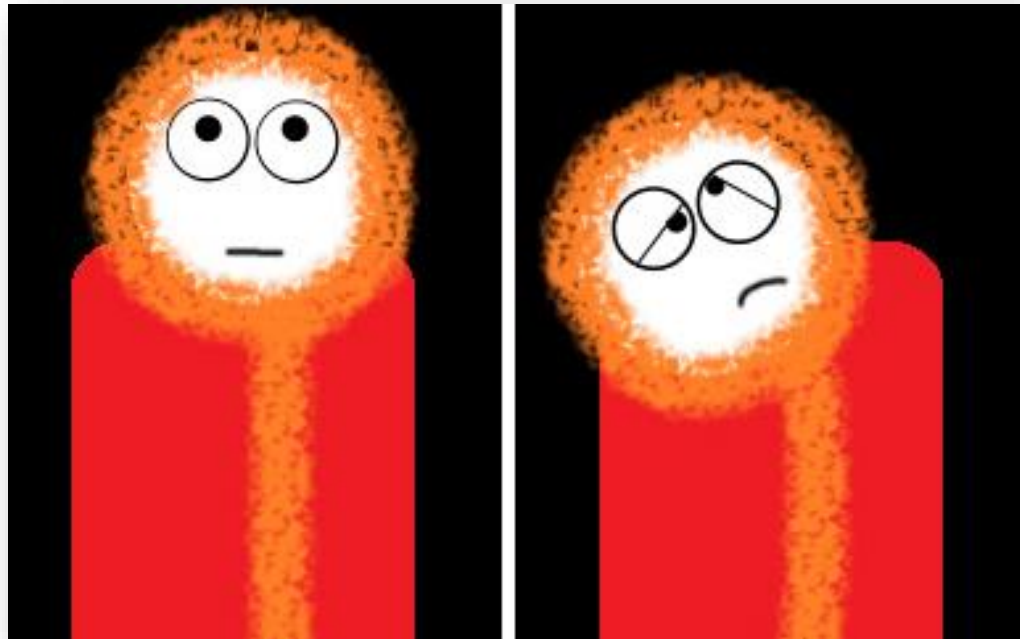
gives insight into ...

**... the domino effect
of animal abuse.**



The process begins when children who are repeatedly exposed to abuse and misery become

desensitised.



Desensitisation is a *loss of feeling*.
Children become *indifferent* to misery and degradation.



The next step

is when children become accustomed to misery.

This is called **habituation**



Habituation to neglect and abuse means that it has become ***routine*** and a ***“normal”*** part of their lives.

Desensitisation and ***habituation*** directly oppose
the crucial development in childhood of ...



...empathy

***What is EMPATHY
and why is it so important?***

Empathy is not a skill to be learned
like maths and science,
it is a **neurological** tool for survival,
inborn across species.



It is the ability to **inhabit the feelings** of fellow beings,
and feel their fear, their thrill, their sorrow
and to **respond with an appropriate emotion.**



Empathy resolves problems and by definition,

cannot oppress.

It makes the 'other' feel

valued, heard,

acknowledged

and respected.

Empathy is the vital ingredient



... **the glue** that holds human society together.

However, the natural development of *empathy* ...



... is *thwarted* by the process of

desensitization.

Loss of empathy

stunts



... a child's emotional development
so that his/her potential to become an emotionally
mature adult, **is not realised.**

Adults who are **under-developed emotionally ...**



... will more readily ***resort to violence*** to resolve problems.

Many scientists now believe that this **damage** to the **emotional development** of a child ...



... is a form of ***child-abuse.***

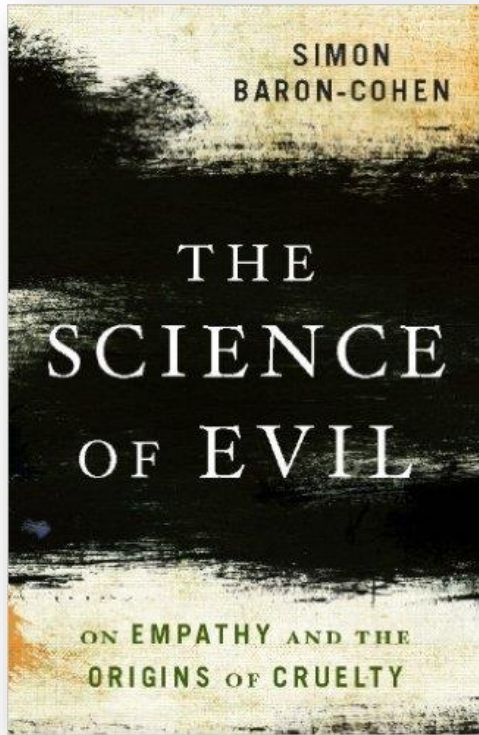
“Without empathy ...



... we risk the breakdown of relationships, become capable of hurting others, and cause conflict.

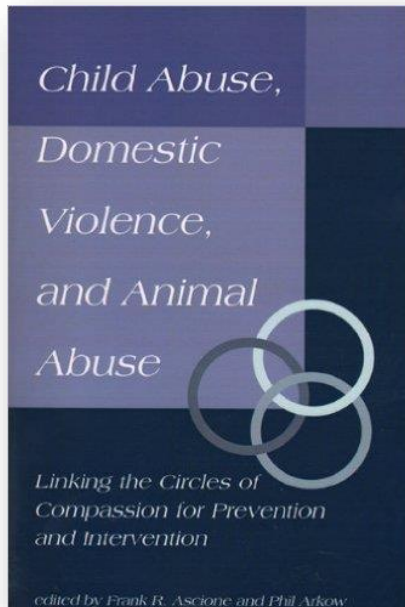


Multi-award winning Cambridge psychologist,
Professor Simon Baron-Cohen suggests that ...



... loss of empathy is the ***'root of all evil'.***

Phil Arkow is author of
“Child Abuse, Domestic Violence and Animal Abuse”
and Coordinator in the USA of the ***National Resource Center on
The Link between Animal Abuse and Human Violence.***



Arkow points out that animals are usually the first to exhibit
our loss of empathy



“What should be seen as a **red flag** or warning marker, is readily dismissed as ‘oh well, boys will be boys’ or **‘it’s only a dog, what’s the big deal?’**” says Arkow

“Instead of talking about ‘evil’, we should talk about the ...

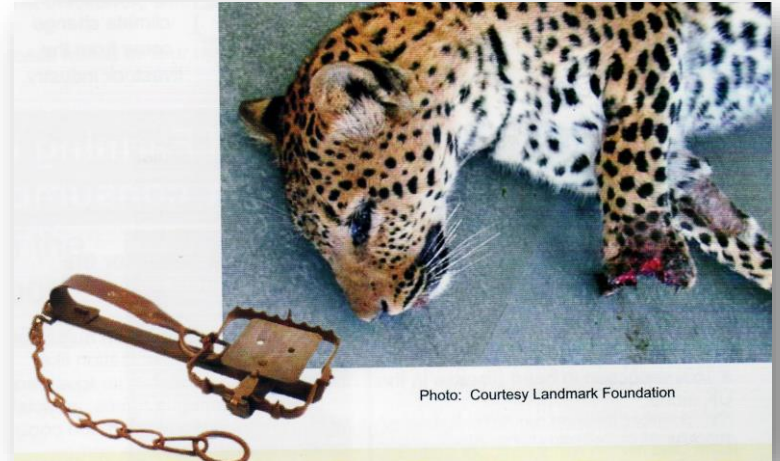


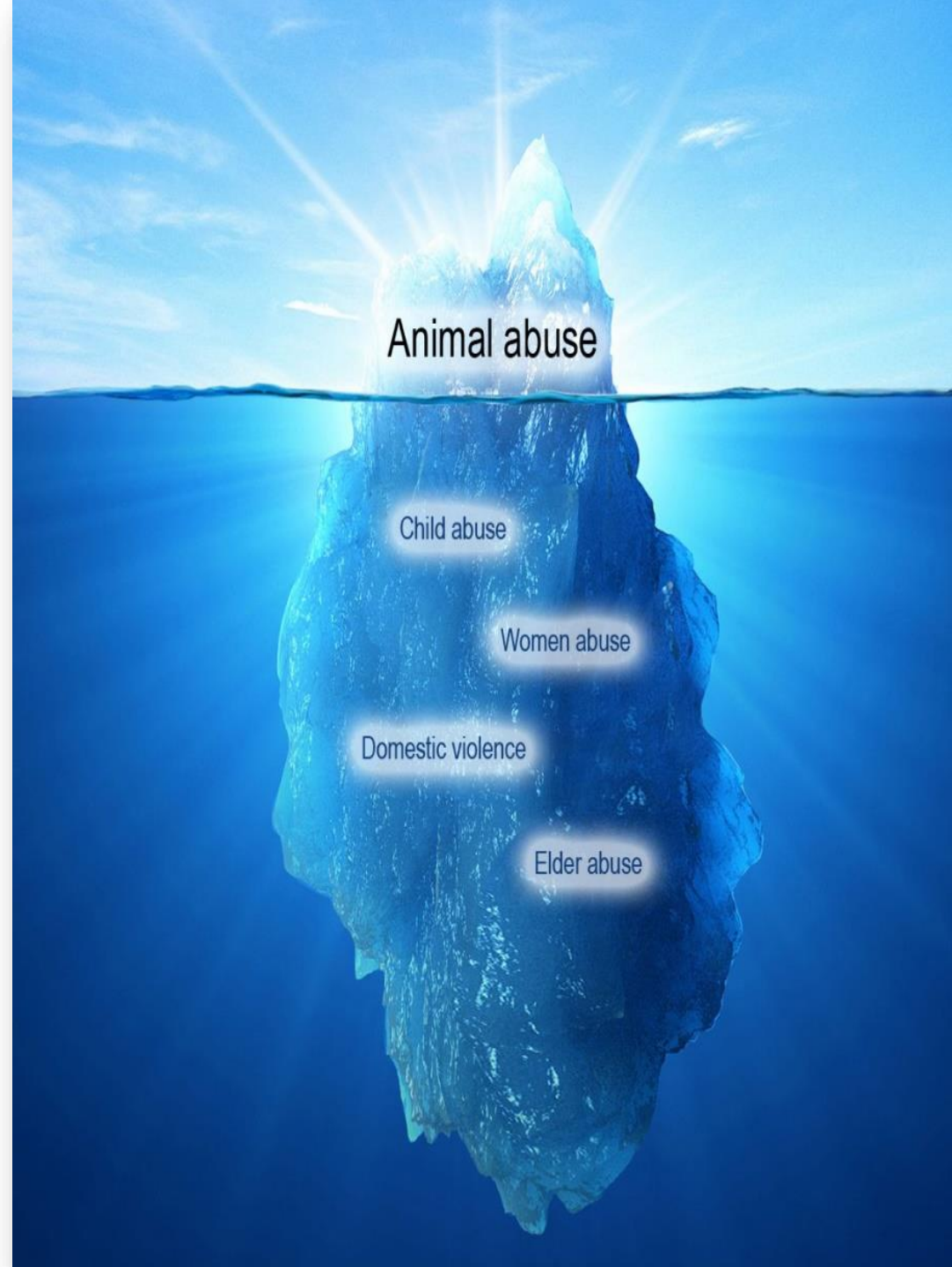
Photo: Courtesy Landmark Foundation

**... absence
of empathy.”**



How do we create
an environment that
supports the
development of

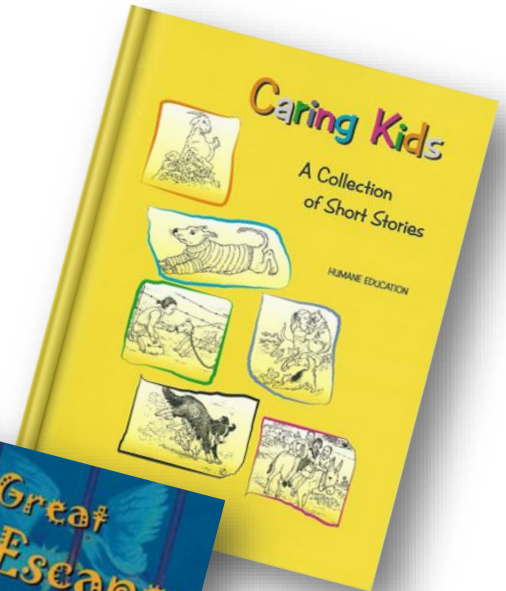
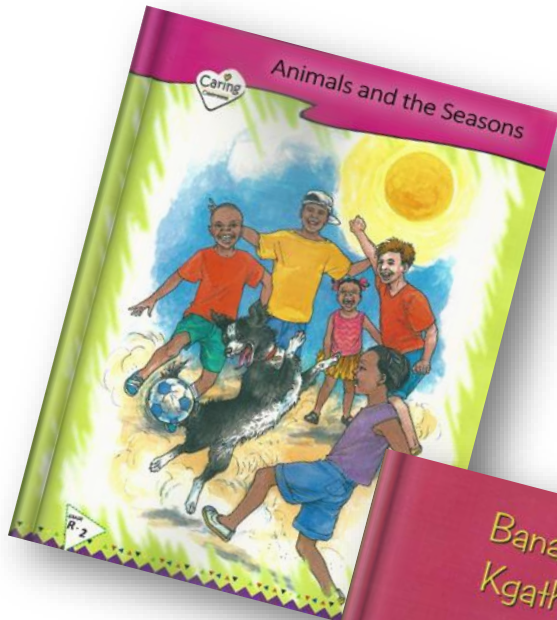
EMPATHY?



... perhaps the most valuable
social resource in our world.



Professor Kai Horsthemke (University of the Witwatersrand) believes that **Humane Education** holds the key.



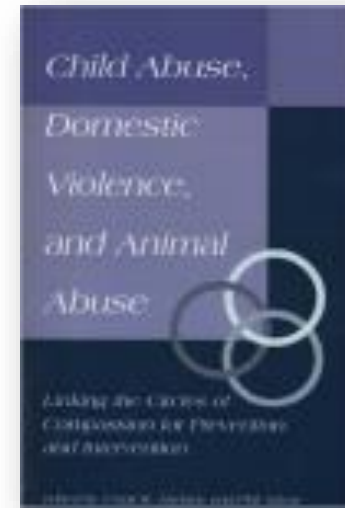
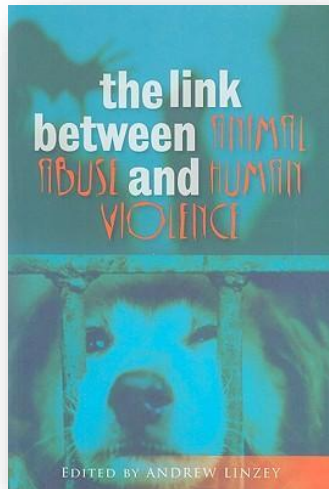
He says we need to teach our children...

- **Justice**, not just **kindness**
- **Respect**, not just **compassion**
- **Rights**, not just **protection**

**It is these principles that
underpin our programme**



Information Sources



Psychology Today: <https://www.psychologytoday.com/.../are-we-entering-the-age-empathy>

South West Scotland Community Justice Authority: <http://www.swscja.org.uk/the-sticky-stuff-or-how-empathy-can-help-glue-broken-britain-back-together.html>

Empathy in the Global World: An Intercultural Perspective: edited by Carolyn Calloway-Thomas, published by SAGE

Empathy and Morality: edited by Heidi L. Maibom, published by Oxford University Press